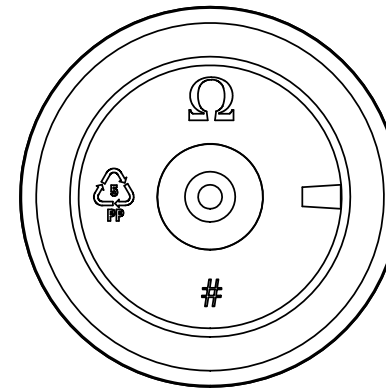
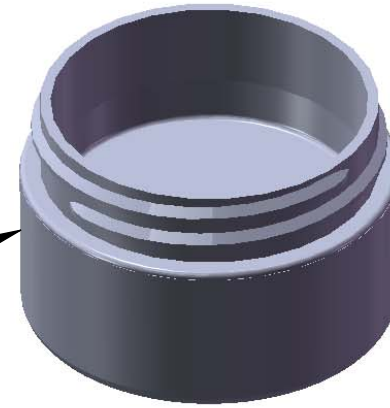


"FROSTED"  
Texture  
Finish



Bottom  
View

Notes:

1. Material: Polypropylene (PP)
2. Weight: Approx 12 grams
3. Overflow Capacity: Approx 23 cc
4. Thread: 6 TPI
5. Printable / Label area:  
6.00" wraparound x 0.56" height  
(labels should account for 1/2° wall taper)
6. Omega Part # 3425

DIMENSION	TOLERANCE
.00	.015
.000	.010



15210 Desman Rd.  
La Mirada, CA 90638  
(714) 670-6400  
omegapkg.com

**PROPRIETARY AND CONFIDENTIAL**  
THE INFORMATION CONTAINED  
IN THIS DRAWING IS THE SOLE  
PROPERTY OF OMEGA PKG.  
ANY REPRODUCTION IN PART OR  
AS A WHOLE WITHOUT THE  
WRITTEN PERMISSION OF OMEGA  
PACKAGING IS PROHIBITED.

REVISION	DATE

0.5oz 48mm  
Straight Base FROSTED  
Double Wall Jar

LAST IR	DATE 6/23/14	DWG. NO. 3425-0.5-48-SB-DWJ	SCALE 1:1
------------	-----------------	--------------------------------	--------------