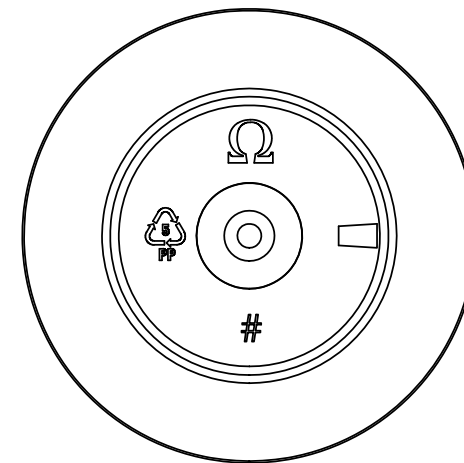
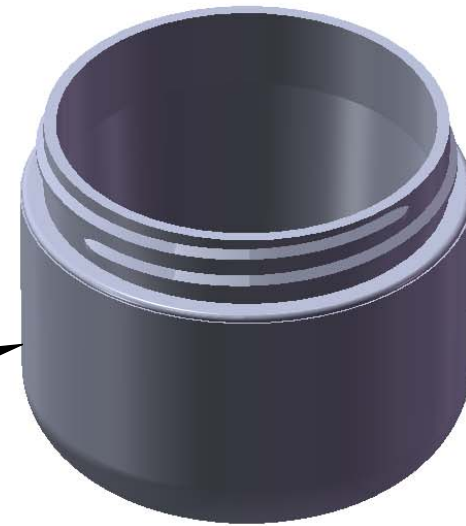


"FROSTED"
Texture
Finish



Bottom
View

Notes:

1. Material: Polypropylene (PP)
2. Weight: Approx 20 grams
3. Overflow Capacity: Approx 76 cc
4. Thread: 6 TPI
5. Printable / Label area:
7.13" wraparound x 0.88" height
(labels should account for 1/2° wall taper)
5. Omega Part # 4500

| DIMENSION | TOLERANCE |
|-----------|-----------|
| .00 | .015 |
| .000 | .010 |



15210 Desman Rd.
La Mirada, CA 90638
(714) 670-6400
omegapkg.com

PROPRIETARY AND CONFIDENTIAL
THE INFORMATION CONTAINED
IN THIS DRAWING IS THE SOLE
PROPERTY OF OMEGA PKG.
ANY REPRODUCTION IN PART OR
AS A WHOLE WITHOUT THE
WRITTEN PERMISSION OF OMEGA
PACKAGING IS PROHIBITED.

| REVISION | DATE |
|----------|------------|
| IR | 4/11/2013 |
| IR | 5/31/2013 |
| IR | 9/12/2013 |
| IR | 12/02/2013 |

2oz 58mm
Round Base FROSTED
Double Wall Jar

DWG. NO. 4500-2-58-RB-DWJ

SCALE 1:1