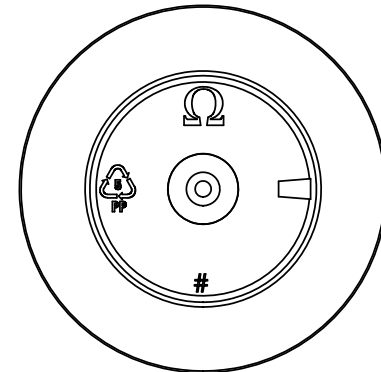
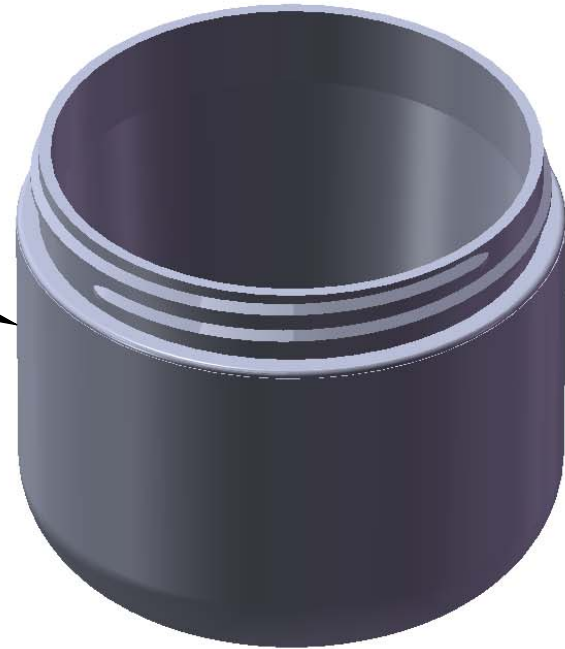


"FROSTED"
Texture
Finish



Bottom
View
(not to scale)

Notes:

1. Material: Polypropylene (PP)
2. Weight: Approx 31 grams
3. Overflow Capacity: Approx 148 cc
4. Thread: 6 TPI
5. Printable / Label area:
8.75" wraparound x 1.25" height
(labels should account for 1/2° wall taper)
6. Omega Part # 4525

DIMENSION	TOLERANCE
.00	.015
.000	.010



15210 Desman Rd.
La Mirada, CA 90638
(714) 670-6400
omegapkg.com

PROPRIETARY AND CONFIDENTIAL
THE INFORMATION CONTAINED
IN THIS DRAWING IS THE SOLE
PROPERTY OF OMEGA PKG.
ANY REPRODUCTION IN PART OR
AS A WHOLE WITHOUT THE
WRITTEN PERMISSION OF OMEGA
PACKAGING IS PROHIBITED.

REVISION	DATE
IR	12/02/2013
IR	1/20/2014

4oz 70mm Round Base FROSTED Double Wall Jar	
DWG. NO.	SCALE
4525-4-70-RB-DWJ	1:1