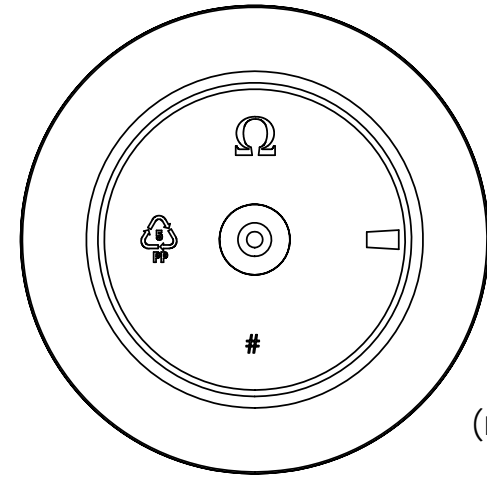
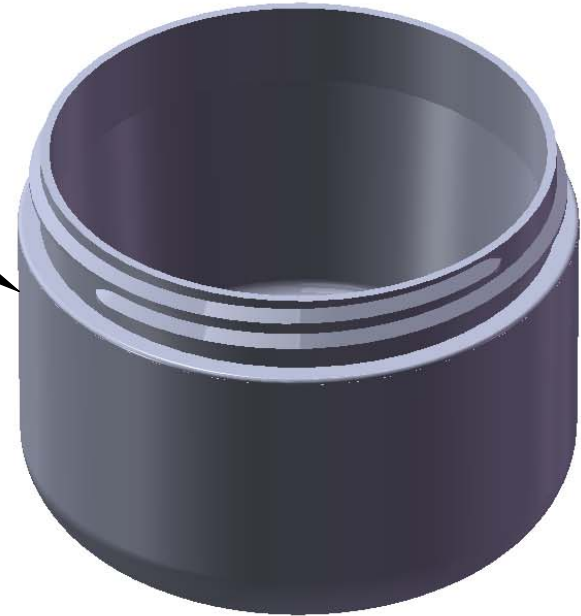


"FROSTED"
Texture
Finish



Bottom
View
(not to scale)

Notes:

1. Material: Polypropylene (PP)
2. Weight: Approx 48 grams
3. Overflow Capacity: Approx 283 cc
4. Thread: 5 TPI
5. Printable / Label area:
11.25" wraparound x 1.38" height
(labels should account for 1/2° wall taper)
6. Omega Part # 4600

DIMENSION	TOLERANCE
.00	.015
.000	.010



15210 Desman Rd.
La Mirada, CA 90638
(714) 670-6400
omegapkg.com

PROPRIETARY AND CONFIDENTIAL
THE INFORMATION CONTAINED
IN THIS DRAWING IS THE SOLE
PROPERTY OF OMEGA PKG.
ANY REPRODUCTION IN PART OR
AS A WHOLE WITHOUT THE
WRITTEN PERMISSION OF OMEGA
PACKAGING IS PROHIBITED.

REVISION	DATE
IR	12/30/2013
IR	1/13/2014

8oz 89mm
Round Base FROSTED
Double Wall Jar
DWG. NO. 4600-8-89-RB-DWJ
SCALE 1:1